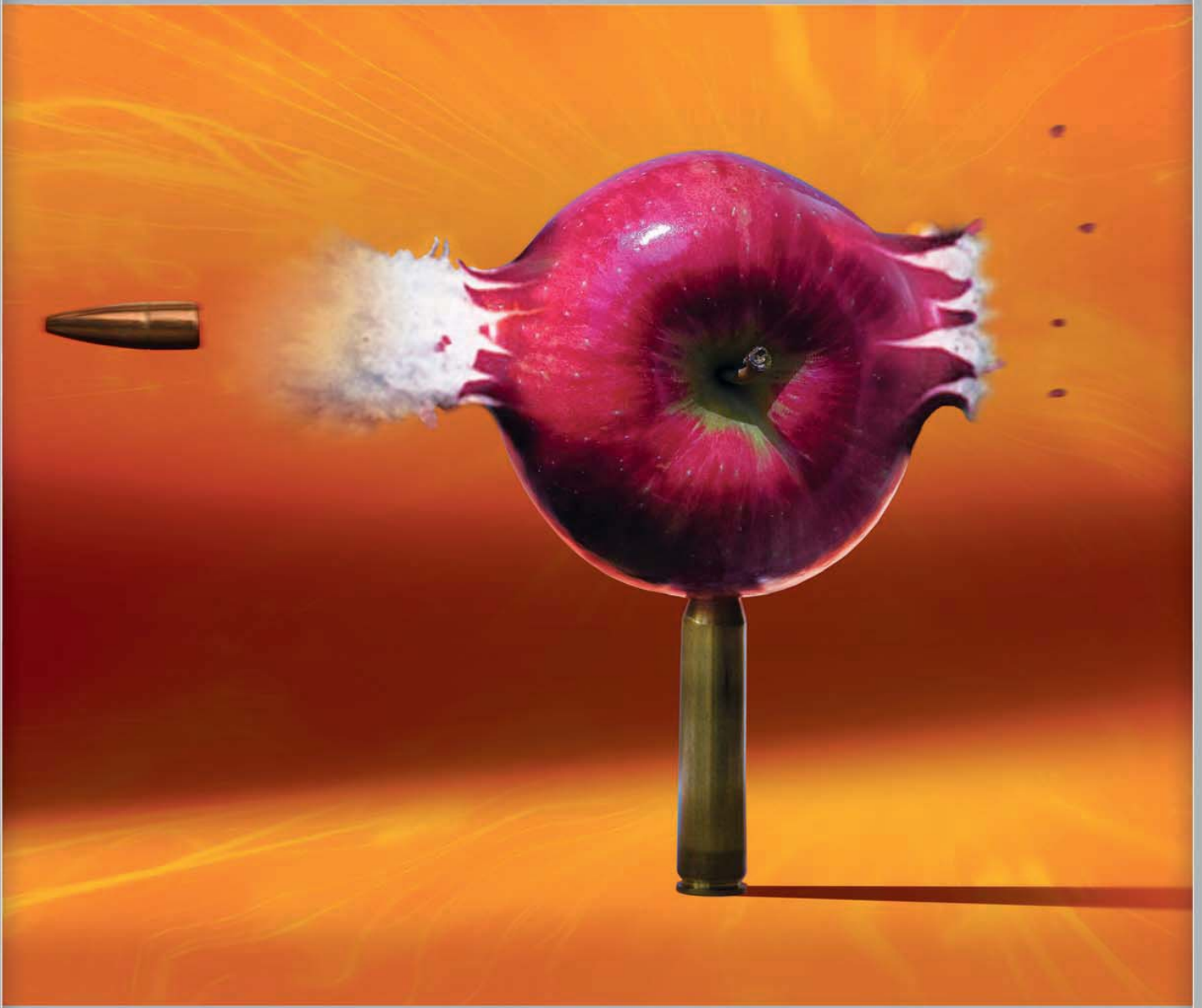




**smart vision lights**



[smartvisionlights.com](http://smartvisionlights.com)

## OverDrive



**OverDrive™** lights are **strobe-only** and feature a special integrated driver for complete LED light control. This combination makes these lights the brightest available in the Vision Industry. The **OverDrive** offers our SafeStrobe technology. This unique technology applies safe working parameters to ensure the LEDs are not damaged by driving them beyond their limits. This is especially beneficial for overdriving today's new high-current LEDs. The **OverDrive** series provides repeatable intensity control and pulsing by using a microprocessor to watch and control the power to the LEDs for safe operation. The integrated **OverDrive** controller offers both NPN and PNP strobe input for easy integration to today's smart cameras. Lights have high-speed reaction times that offer extremely fast repeatable pulse times.

- Highest power LED lights available in the Vision Industry
- SafeStrobe Technology ensures protected operation of LEDs
- 4 to 10 times brighter than standard high-current LED lights
- Precise current provides stable light intensity
- High Speed Fast Response
- Connect-a-Light® technology
- NPN and PNP strobe control

## EZMount



The R-80 or R-130 LED Ring can be easily adapted to any vision system with any of five standard mounting options. First,

there is a standard M46 thread protruding from the back of the R80 or R130. Readily available step-up or step-down rings can be mounted directly to the threads found on the front end of most lenses. Second is mounting directly on many cameras. Adapter rings are available for many camera manufacturers. Third is the ability to mount the lens at the front end of the R-80 and R130 Ring Light. The camera lens is inserted through the center of the R-80 or R130 and threaded onto the step ring. Fourth is a T-slot on all 6 sides. Standard industrial T-nuts can be dropped into the slot for mounting. The fifth way to mount the light is using the 4-or-6 threaded M4 holes on the back plate of the light. Additional mounting information can be found at [www.ezmountringlight.com](http://www.ezmountringlight.com).

- Adapter Rings mount light directly to many cameras
- Step up and Step down adapter rings mount to lenses
- T- Nut slots on all sides
- 4-or- 6 threaded M4 holes

### Mounting Bracket Options



## Prox Lights



Washdown



Remote



Explosion-Proof



Standard

- Standard industrial 30mm barrel housing
- Uses standard industrial M30 sensor-type mounts
- Built-in Smart Driver
- Available in all colors

The high-output Prox Light is a surprisingly powerful single LED spotlight encased in a 30mm aluminum barrel housing. One advantage of this light is its ability to be mounted using off-the-shelf brackets. This light was intentionally designed to give the customer the option of utilizing any 30mm proximity switch bracket for easy mounting. This IP68-rated light is available in Standard, 316 stainless steel washdown, remote head, fiber-bundle-ready, and explosion-proof.

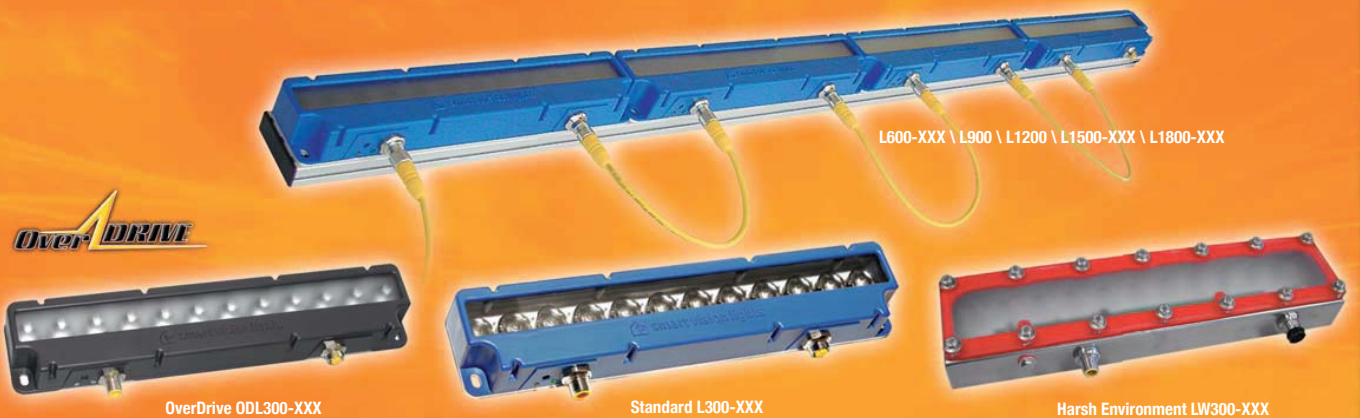
## Brick Lights®



- Six high-output LEDs
- Compact 75mm housing
- Available in Standard, OverDrive™, Harsh Environment, or Backlight configurations
- Built-in Smart Driver
- Available in all wave lengths/colors

The Brick Light is our most powerful small spotlight. It utilizes six high-output LEDs in a compact 75mm housing. The strong and lightweight housing is made of military-grade high-impact polyurethane. This light is available in Standard, OverDrive, Washdown, or in our amazingly uniform Brick Backlight configuration. Brick Lights include an integrated smart driver with built-in strobe input for PNP or NPN trigger control and intensity control.

## Connect-A-Light®



- Twelve high-output LEDs
- Ability to “daisy-chain” additional lights off of one power source
- Available in Standard, OverDrive™, and IP68 Harsh Environment
- Built-in Smart Driver
- Available in all wave lengths/colors

The linear Connect-A-Light is a twelve LED, 300mm modular bar light. Additional lights can be “daisy-chained” together, creating one light. The spacing between the high-current LEDs is the same between lights as in an individual light. The LEDs remain equally spaced between lights. When lights are connected, placing lights end-to-end, there is no uniformity difference. The Connect-A-Light has revolutionized the light industry.

## Ring Lights



R130-XXX



R80-XXX

**Three  
Easy  
Options**



Front



Back



Small Camera

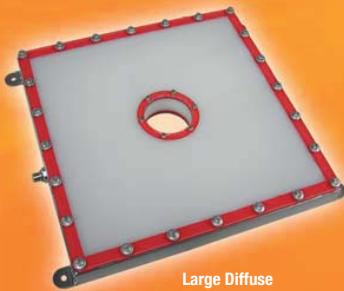
- EZ Mount system provides different mounting options
- Easily incorporates in any Vision System
- Currently offered in 80mm and 130mm sizes
- Mounts directly to cameras and lenses
- Built in Smart Driver
- Available in all wave lengths/colors

The EZ Mount Ring Light family is SVL's latest addition. It currently features the 80mm, 4 LED **R80** and the 130mm 8 LED **R130**. These lights can be quickly and easily adapted to any vision system with any one of four standard mounting options. By using the adapter kit, the user can mount a camera or lens to the front of the light with the supplied set of screws or thread it on to the back of the light. The user can also utilize the t-nut slots on all four sides or a screw can be used on the M46 threaded holes tapped through the back plate.

## Harsh Environment



Prox Light ©



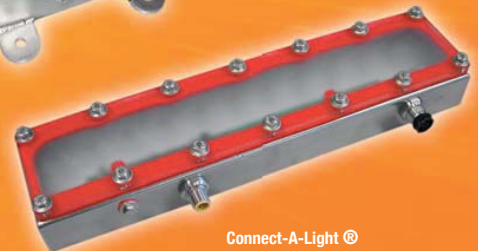
Large Diffuse  
Ring Light



Standard Output  
Series Back Lights



Brick Light ©



Connect-A-Light ©

- Prox Light®
- Brick Light®
- Connect-A-Light®
- Standard Output Series Back Lights
- Large Diffuse Ring Light

SVL offers a complete line of Harsh Environment lights for the Machine Vision Industry. Harsh Environment Series lights are IP68 Washdown rated. They meet FDA compliances for use in food and pharmaceutical industries. All SVL Washdown Lights are constructed of corrosion-resistant 316 stainless steel. Harsh Environment Lights are available in all wavelengths/colors.

# Back Lights

## SOBL-STANDARD OUTPUT BACK LIGHTS

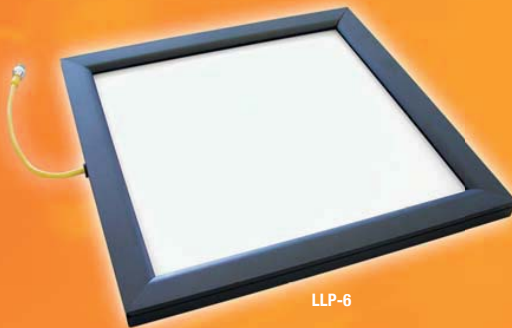


SOBL-150X130-XXX



SOBL-300X300-XXX

## LARGE LIGHT PANEL



LLP-6

## HOBL-HIGH-OUTPUT BACK LIGHTS



HOBL-150X130-XXX

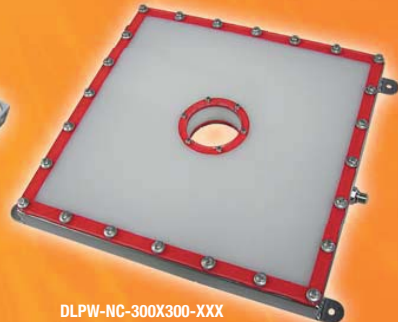
## DIFFUSE RING LIGHT PANELS



LLP-XXX-H



DLP-300X300-XXX



DLPW-NC-300X300-XXX

### LLP

- Available in 6 different sizes
- Option for custom-cut hole in center for use as a large diffuse ring light

### SOBL

- Constructed of standard 30mm industrial aluminum extrusion with 8mm T-slot
- Feature a thin profile (only 30mm thick)
- Available in IP68 Harsh Environment Back Light and large diffuse ring light

### HOBL

- Available constant and strobe with up to 100,000 Lux
- Microprocessor monitors high-power LEDs during operation.
- Temperature compensation circuit monitors the light and adjusts the intensity to maintain a stable level of output during operation

There are currently 4 different series of Back Lights available from Smart Vision Lights. The **LLP** (Large Light Panel), **SOBL** (Standard Output Back Light), **HOBL** (High Output Back Light), and **Harsh Environment** series Back Lights provide excellent solutions for silhouetting objects as well as diffused front lighting.

# Accessories

## Smart Color Box



6 High Current LED's - White, Red 625nm, Blue 470nm, Green 530nm, UV 395nm & IR 850nm

- Li-ion battery with integrated charger
- Recharges in 2 hours
- Push-button testing for LED on/off
- High-power, High-current LEDs

## Cables



All Smart Vision Lights utilize M12-5 pin cables available in:

- Standard
- High-Flex
- Stainless Steel Washdown

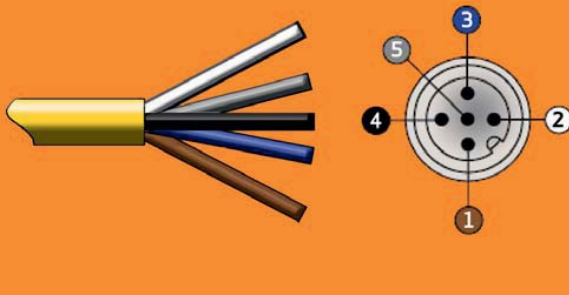
## Diffusers & Linear Polarizers



Available for the following lights:

- Prox Light
- Brick Light
- Connect-A-Light
- EZ Mount Ring Light

## Standard M12 5 Pin cable with Euro color code



PIN	Wire Color	Function	Signal
1	Brown	Power	+24VDC
2	White	NPN Strobe	GNV for Active ON
3	Blue	Ground	GND
4	Black	PNP Strobe	5VDC or greater for Active ON
5	*Gray	Analog Intensity Control	0-10 VDC
	Yellow		
	Green		

\*Pin 5 (center pin) on M12 mating cable may be green/yellow on some cables.



WWW.STEMMER-IMAGING.COM · IMAGING IS OUR PASSION

GERMANY  
AUSTRIA  
Phone: +49 89 80902-0  
info@stemmer-imaging.de

UNITED KINGDOM  
IRELAND  
Phone: +44 1252 780000  
info@stemmer-imaging.co.uk

FRANCE  
Phone: +33 1 45069560  
info@stemmer-imaging.fr

SWITZERLAND  
LIECHTENSTEIN  
Phone: +41 55 415 90 90  
info@stemmer-imaging.ch

THE NETHERLANDS  
BELGIUM · LUXEMBOURG  
Phone: +31 575 495159  
info@stemmer-imaging.nl

**STEMMER**<sup>®</sup>  
IMAGING