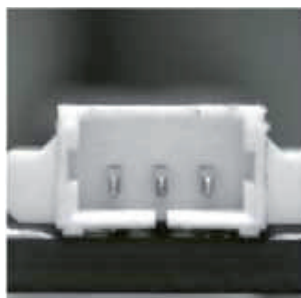




MC Series is a family of macro lenses designed to capture images of small objects when both very good resolution and nearly zero distortion are needed. Small object fields of view are often observed by means of long focal length lenses equipped with an additional spacer, used to adjust the working distance. Unfortunately, this approach leads to several problems like high image distortion, resolution loss (especially at the corners), poor depth of field and chromatic effects, thus making this method not suitable for good imaging neither compatible with accurate measurement requirements.

All of these problems can be overcome by using MC Series, specifically designed for MACRO imaging. MC Series lenses are compact and cost-effective optics providing very high image resolution. A very low optical distortion makes these lenses perfectly suitable for precise dimensional measurement applications.

Part Number	Magn. (x)	DETECTOR TYPE					OPTICAL SPECIFICATIONS				MECHANICAL SPECIFICATIONS			
		1/4"	1/3"	1/2"	1/1.8"	2/3"	W.D. (mm)	Distortion (%)	F-Number	Field Depth (mm)	Length (mm)	Diam. (mm)	Height (mm)	Mount
		3,6 x 2,7 (mm)	4,8 x 3,6 (mm)	6,4 x 4,8 (mm)	7,0 x 5,3 (mm)	8,8 x 6,6 (mm)								
		FIELD OF VIEW (mm x mm)												
MC3.00X	3	1,2 x 0,9	1,6 x 1,2	2,1 x 1,6	2,3 x 1,8	2,9 x 2,2	29	<0,01	20	0,15	106,5	15,0	30	C-mount
MC2.00X	2	1,8 x 1,4	2,4 x 1,8	3,2 x 2,4	3,5 x 2,6	4,4 x 3,3	33	<0,01	16	0,25	78,1	15,0	30	C-mount
MC1.50X	1,5	2,4 x 1,8	3,2 x 2,4	4,3 x 3,2	4,7 x 3,5	5,9 x 4,4	38	<0,01	13	0,35	63,9	15,0	30	C-mount
MC1.00X	1	3,6 x 2,7	4,8 x 3,6	6,4 x 4,8	7,0 x 5,3	8,8 x 6,6	47	<0,01	10	0,6	49,9	15,0	30	C-mount
MC0.75X	0,75	4,8 x 3,6	6,4 x 4,8	8,5 x 6,4	9,4 x 7,0	11,7 x 8,8	58	<0,02	9	1,1	42,8	15,0	30	C-mount
MC0.50X	0,50	7,2 x 5,4	9,6 x 7,2	12,8 x 9,6	14,1 x 10,6	17,6 x 13,2	75	<0,02	8	2,1	35,7	15,0	30	C-mount
MC0.33X	0,33	10,8 x 8,1	14,4 x 10,8	19,2 x 14,4	21,1 x 15,9	26,4 x 19,8	102	<0,05	7	3,7	31,0	15,0	30	C-mount



KEY ADVANTAGES

ZERO DISTORTION

MC Series are suitable for any measurement application where telecentricity is not required.

HIGH RESOLUTION

MC Series has been specifically designed to work in "macro" configuration.

COMPACTNESS

MC Series small outer diameter (15 mm) fits those applications where only small room for optical components is available.