

TC 4M 16

Bi-Telecentric Lens for Large Detectors up to 1.2" (21.5 mm diagonal)



part number		TC 4M 16 (/C/F)
Magnification		1,056 +/- 3%
Field Of View	(mm)	
with KAI-02020		11,2 x 8,4
with KAI-04050		12,1 x 9,1
with KAI-04022/4021		14,4 x 14,4
with KAI-08050		17,1 x 12,9
Working Distance	(mm)	45,3 +/- 1
Working F-number		16
Telecentricity typical (max)	(degree)	< 0,08 (0,10)
Distortion typical (max)	(%)	< 0,04 (0,10)
Field Depth	(mm)	1,0
CTF @50 lp/mm	(%)	> 30
Image side NA.		0,0310
Object side NA.		0,0330
Mount		C or F
Length	(mm)	217,7
External diameter	(mm)	37,7
Weight	(g)	700

Possible vignetting at the image corners with KAI-08050 detectors

ACCESSORIES AND OPTIONS:

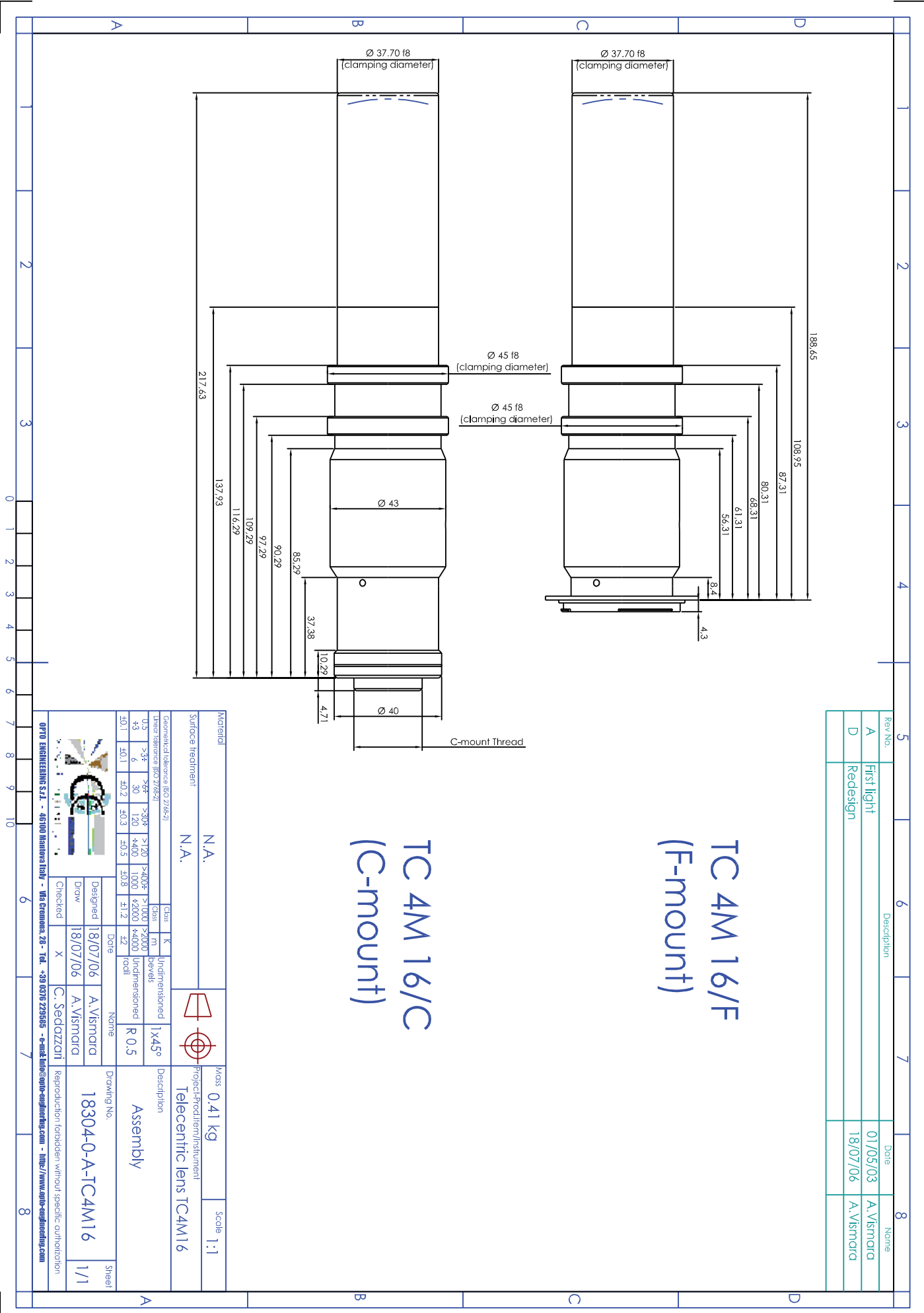


Collimated/Telecentric illumination:
Compatible with LTCL16 illuminator;
green light suggested.



Clamping Mechanics:
Compatible with CMH016.

Mechanical drawings:
see next page >>



Rev No.	Description	Date	Name
A	First light	01/05/03	A. Vismara
D	Redesign	18/07/06	A. Vismara

TC 4M 16/F (F-mount)

TC 4M 16/C (C-mount)

Material	N.A.	Mass	0.41 Kg	Scale	1:1
Surface treatment	N.A.				

Geometrical tolerance (ISO 2768-2)	Class	K	Indimensioned	1x45°	Description
Linear tolerance (ISO 2768-2)	Class	m	bevels	R 0.5	Assembly

U5	-3%	-6%	-30%	>120	F-40%	F-100%	F-200%
+3	6	30	120	+400	+1000	+2000	+4000
±0.1	±0.1	±0.2	±0.3	±0.5	±0.8	±1.2	±2
±0.1	±0.1	±0.2	±0.3	±0.5	±0.8	±1.2	±2

Designed	18/07/06	A. Vismara	Drawing No.	18304-0-A-TC4M16	Sheet	1/1
Draw	18/07/06	A. Vismara				
Checked	X	C. Sedazzini	Reproduction forbidden without specific authorization			

OPTO ENGINEERING S.r.l. - 46100 Mantova Italy - Via Brenna, 28 - Tel. +39 0376 229585 - e-mail info@opto-engineering.com - <http://www.opto-engineering.com>